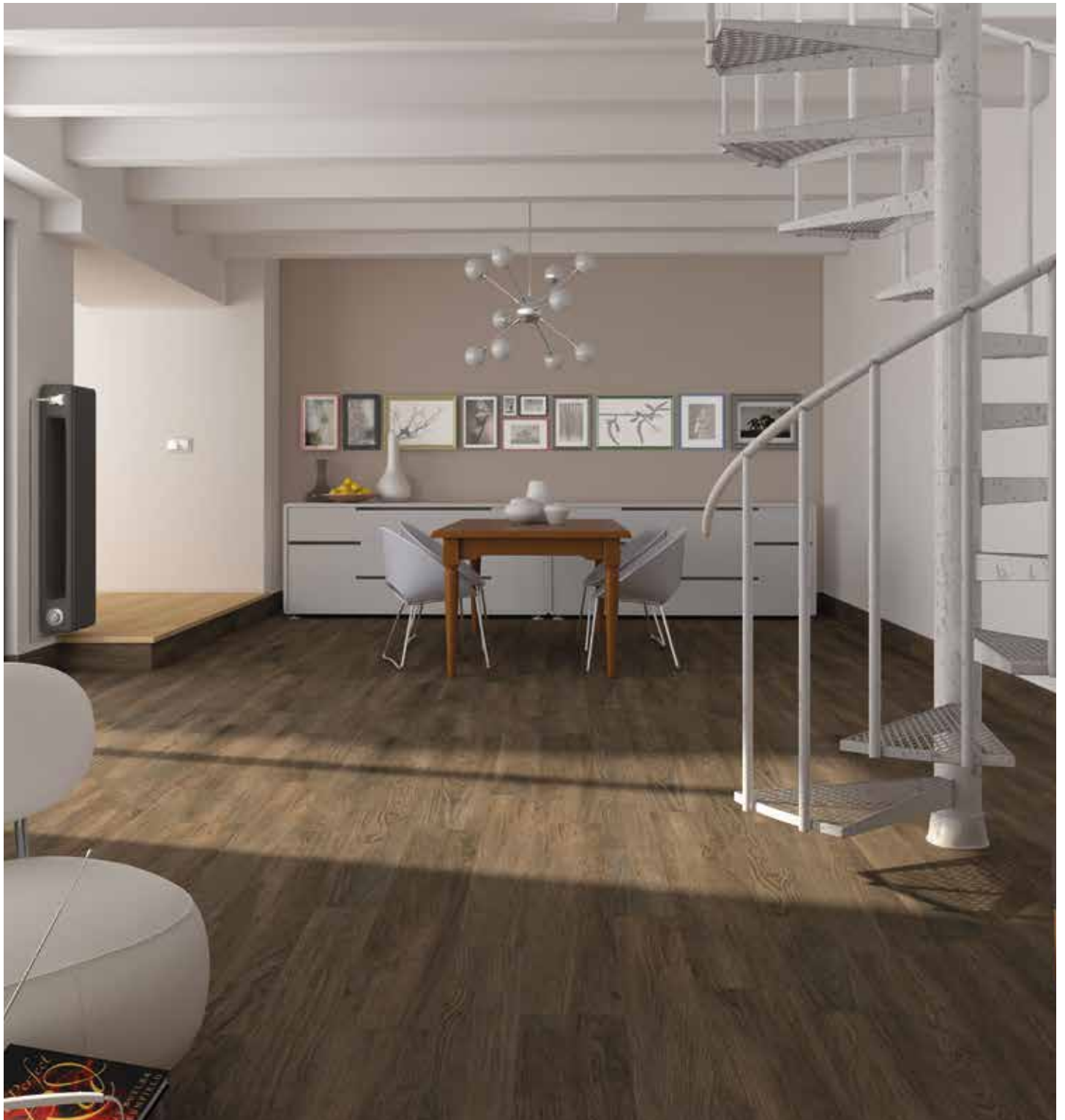


# PORCELAIN WOOD

Unrivaled strength. Timeless beauty.



## Selwood

Simplistic and timeless, this range is specifically designed to offer a range of authentic and traditional English woods

Product displayed is Selwood Night

# PORCELAIN WOOD

Unrivalled strength. Timeless beauty.

## The Selwood Range



Selwood Aged



Selwood Coast





Selwood Night



Selwood Charcoal



Selwood Natural

Dimensions: 14.3 x 119.3cm (5.6 x 47.0 inches)   12.3mm thickness

---



Selwood Aged



Selwood Coast





Selwood Night



Selwood Charcoal



Selwood Natural

Dimensions: 19.2 x 119.3cm (7.6 x 47.0 inches)   12.3mm thickness

---

# PORCELAIN WOOD

Unrivaled strength. Timeless beauty.

Technical characteristics		Reference standard
Manufacture process	Single-firing	Dry pressed ceramic tile
Thickness (mm)	12.3	UNE EN ISO 10545 Part 2
Length, width, thickness, side straightness, orthogonality, flatness	Conforms to the requisites applicable to each model as defined in standard UNE-EN 14411 for Group B la	UNE EN ISO 10545 Part 2
Water absorption	E< 0.5 %	UNE EN ISO 10545 Part 3
Flexion resistance N/sq. mm. and breaking strength	> 35 > 1300	UNE EN ISO 10545 Part 4
Resistance to surface abrasion (Glazed tiles)	Available on request	UNE EN ISO 10545 Part 7
Lineal thermic dilatation	< 9*10 <sup>-6</sup> /° C	UNE EN ISO 10545 Part 8
Thermic impact resistance	Conforms to industrial standard	UNE EN ISO 10545 Part 9
Cracking resistance	Conforms to industrial standard	UNE EN ISO 10545 Part 11
Frost resistance	Conforms to industrial standard	UNE EN ISO 10545 Part 12
Slip resistance	Class 1 R9	UNE ENV 12633:2003
Chemical resistance		
Domestic cleaning products	Type GA	UNE EN ISO 10545 Part 13
Swimming pool salt	Type GA	
Acids and bases (low concentration)	Minimum Type GLB	UNE EN ISO 10545 Part 14
Stains resistance	Minimum Type 4	

anti-slip  R9

DEDICATED SLIP RESISTANCE. The Selwood range is specifically designed to provide better safety in areas of pedestrian traffic, where the humidity conditions and slopes are greater than normal. Selwood rates higher than the test results recommended by Regulation UNE-ENV 12633:2003.